

Description

BP2373XG is a high precision non-isolated APFC buck LED driver, specially designed for universal mains with constant current control. BP2373XG operates in Critical Conduction Mode to reduce the switching loss and optimize the EMI.

BP2373XG remove the VCC capacitor, COMP capacitor and R_{CS} resistor to simplify the external BOM. And it utilizes specific current detection, with few external components, it achieves high precision output current, excellent line regulation and load regulation.

BP2373XG offers full of protection functions to improve the system reliability, including LED load short protection. The system reliability is further improved by the thermal and input overvoltage regulation function. The output current is reduced when the driver is in condition of over temperature or input overvoltage.

Features

- Active-PFC for High PF and Low THD
- No VCC and COMP capacitor
- Integrated current sense resistor
- Integrated 800V rectifier bridge
- Integrated 650V superfast recovery diode
- Critical Conduction Mode Operation
- LED Short Protection
- Cycle by Cycle Current Limit
- Thermal Regulation Function
- Input Overvoltage Regulation Function
- Available in ASOP7 Package

Applications

- LED Bulb
- LED Tube
- Other LED Lighting



Typical Application

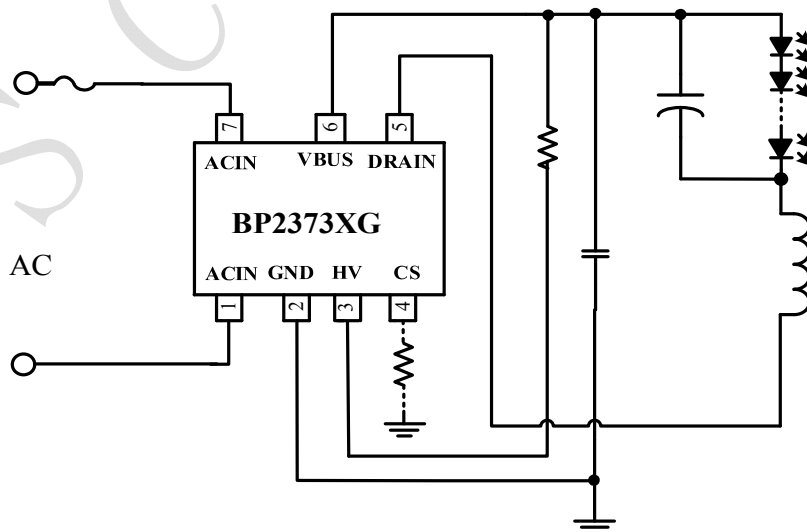
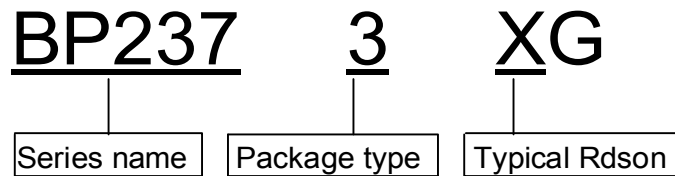


Figure 1 Typical application circuit for BP2373XG

Naming rules



Ordering Information

Part Number	Package	Package Method	Marking
BP2373XG	ASOP7	Tape 5,000 pcs/Reel	BP2373 XXXXXYX ZZZZWWG

Pin Configuration and Marking Information

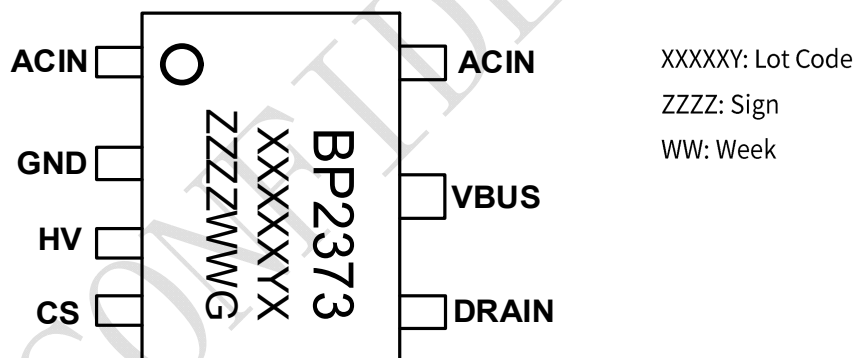


Figure 2. Pin configuration

Pin Definition

Pin No.	Name	Description
1,7	ACIN	Input Voltage.
2	GND	Ground.
3	HV	High Voltage startup and power supply.
4	CS	I _{LED} internal default value 94.5mA when CS floating
5	DRAIN	Internal High Voltage Power MOSFET Drain.
6	VBUS	Built-in diode negative

Disclaimer

The information provided in this datasheet is believed to be accurate and reliable. However, Bright Power Semiconductor (BPS) reserves the right to make changes at any time without prior notice.

No license, to any intellectual property right owned by BPS or any other third party, is granted under this document. BPS provides information in this datasheet “AS IS” and with all faults, and makes no warranty, express or implied, including but not limited to, the accuracy of the information provided in this datasheet, merchantability, fitness of a specific purpose, or non-infringement of intellectual property rights of BPS or any other third party. BPS disclaims any and all liabilities arising out of this datasheet or use of this datasheet, including without limitation consequential or incidental damages.

BPS CONFIDENTIAL